



Richie McFarland Children's Center

**FAMILY-CENTERED EARLY SUPPORTS
AND SERVICES PROGRAM (ESS)**

EARLY LEARNING GROUPS

PEDIATRIC THERAPIES

ENRICHMENT PROGRAMS

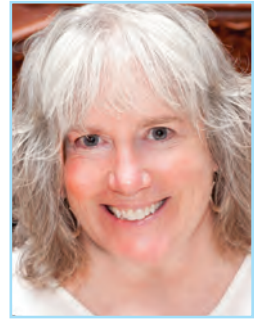
.....

www.richiemcfarland.org

★ LEADERSHIP REPORT

A PROMISE FOR THE FUTURE FROM THE EXECUTIVE DIRECTOR

Richie McFarland Children's Center is passionate about the part we play in supporting children and their families in the greater seacoast. Our partnership with individuals, families, businesses and municipalities affords our organization the opportunity to continue to help make our community a better place to live and raise children. It is challenging to balance meeting the needs of children and their families with the declining investment of state and federal resources, the denials and exclusions of private insurance policies, and more highly competitive foundation and grant funding. Yet for 43 years we have been available to families seeking support and guidance as they raise their children with developmental differences. With our dedicated and experienced staff, committed and talented volunteers, and generous donors and supporters, we are able to keep our doors open. The strength of families in the seacoast depends upon the health of our program and the array of human service organizations that play a part in supporting children's growth and development. The contribution to the quality of life made by nonprofit organizations in the seacoast is astounding. We are proud to be part of a community that invests in children and families and feel privileged to serve families at such an important time in their own development. *Thank you for your ongoing support!*



Peggy Small-Porter
Executive Director

FINANCIAL MANAGEMENT

STATEMENT OF PUBLIC SUPPORT AND FUNCTIONAL REVENUE & EXPENSES
{ YEAR END JUNE 30, 2012 }

PUBLIC SUPPORT & REVENUE

State & Federal Dollars	\$509,954
Insurance Reimbursements	\$204,776
United Way Allocation	\$12,500
Fundraising	\$92,172
Local Government	\$60,350
Special Events	\$56,788
Other Grants	\$0
Interest Income	\$1,149
Loss on Endowment Fund	\$(1,865)
Total Public Support & Revenue	\$935,824

EXPENSES

Program Services	\$776,922
General & Administrative	\$82,498
Fundraising	\$36,885
Total Expenses	\$898,939
Gain in Public Support & Revenue	\$37,094

Financial information above is a snapshot of selected information which is audited annually by Seelye & Schulz, P.A. Copies of the complete financial statements are available upon request

★ MESSAGE FROM RMCC'S BOARD TREASURER

TINA WILKINSON JULY 2012-JUNE 2013

Richie McFarland Children's Center ended fiscal 2012 with an income of approximately \$36,000 and a strong operating cash position. The Organization's financial statements were audited by our external audit firm, Seelye & Schulz, and received an unqualified opinion.

During fiscal 2013, RMCC has built on the strong cash position from June 2012 while investing in the future. Over the past year, RMCC has renovated the Stratham facility, continued a formal community outreach program, and grew the pediatric therapy program for children not qualified under Early Supports and Services. RMCC is projected to end fiscal 2013 with net income from operations approximately break-even, and a strong cash position which will help the Organization in the years ahead.

RMCC anticipates further degradation in insurance receipts and Early Supports and Services contract revenue in the coming years. We continue to analyze how to deliver quality services to our clients as these financial pressures grow. These pressures will increase the Organization's reliance on private insurance, pediatric therapies and outside fundraising.

The board and management of RMCC see the challenges ahead for the Organization, but are encouraged by progress made over the past several years, and are preparing for the future.

THANK YOU TO OUR DONORS & SPONSORS

BOB'S CLAM HUT
DAVID BARROWS ADVENTURE FUND
OF THE NH CHARITABLE FOUNDATION
BOTTOMLINE TECHNOLOGIES
LOUIS F. CLARIZIO, DDS, PA
COMCAST BUSINESS
CORE ORTHOPEADICS
DAYSTAR COMPUTER SERVICES
DEYGA MEDIA
D.F. RICHARD ENERGY
DIRECT CAPITAL
DR. H.J. LUDINGTON
DUNKIN DONUTS
EXETER AREA NEW CAR DEALERS
ASSOCIATION
EXETER HEALTH RESOURCES
EXETER HOSPITAL
GO FISH! DESIGN, INC.
JAMES FISHBEIN, DDS
J OWEN TODD CHARITABLE
FOUNDATION

JOYCE DESIGN SOLUTIONS
KNIGHTS OF COLUMBUS
THE LEDGES GOLF CLUB
LAMPREY ENERGY
LIBERTY MUTUAL
LIVING INNOVATIONS
MEASURED PROGRESS
OCEAN PROPERTIES, LTD
PALMER & SICARD
PARENTING NH MAGAZINE
PEOPLE'S UNITED COMMUNITY
FOUNDATION
PORTSMOUTH REGIONAL HOSPITAL
PORTSMOUTH ROTARY
PROVIDENT BANK COMMUNITY
FOUNDATION
PIKE INDUSTRIES
RAM PRINTING
ROTARY CLUB OF HAMPTON
THE ROWLEY AGENCY

SEACOAST PARTY 4 A PURPOSE—
THE MAD HATTER
SEACOAST ROTARY
SERVICE CREDIT UNION
STAFFING SENSE
TOYOTA 100 CARS FOR GOOD
TRASH, ETC.
UNITED WAY OF THE GREATER
SEACOAST
UNITIL
VIGILANT CAPITAL MANAGEMENT
WASTE MANAGEMENT
WHEELABRATOR TECHNOLOGIES
THE WOOL FAMILY

★ 2014 SAVE THE DATES!

May 3 SPRING DONATION DRIVE
June TBD 22ND ANNUAL GOLF TOURNEY
June 23 43RD ANNUAL MEETING
October 18 10TH ANNUAL TOUCH-A-TRUCK
October TBD FALL DONATION DRIVE

★ VOLUNTEERS

Roy Aboody ~ Chris Anders ~ Ann Bailey ~ Derek Barney ~ Judy, Don & Liz Baron ~ Ann & Dick Bednar ~ Fay Bellavita
Jean Bernard ~ Matt Blasik ~ Stacey, Patrick, Kevin & Brendan Boyle ~ Andrew & Carol Bridges ~ Stan & Mitchell Brooks
Alicia Brown ~ Sharon Brown ~ Michael Clayburgh ~ Julie Clement ~ Bridgette Croft ~ Steve Davis ~ Victoria Davis &
Becka (her friend) ~ Andrea Dent ~ Amy Dillenbeck ~ Hedi Droste ~ Abby Durant ~ Jeannie Dutka ~ Jim Fishbein
Marline Browne Fitton ~ Jack Ford & Pat Ford ~ Martha Toy Fountain ~ Beth Frede ~ Annie & Paul Gasowski
Stacey & Tom Grella ~ Fran Hall ~ Mary Dee Hanson ~ Jim Harper ~ Lydia Herlihy ~ Kelly Hutchinson ~ Beverly Hodsdon
Deb Howard ~ Suzanne Iverson ~ Mike Johnston ~ Matt Junkins ~ Margaret Jubb ~ Potch Kappalong ~ Mary Lafreniere
Lorraine LaPointe ~ Pat Lyons ~ Doug Marino ~ Gracie Maull ~ Molly McCoomb ~ Tom McGovern ~ Jeff Monroe
Than Meyer & family ~ Kristin & Tom O'Gorman ~ Jeff Olsen ~ Ed Pease & The Seacoast Builders Association
Mike Phelps ~ Jason Pool ~ Judy Rines ~ Matt Romano ~ Donna Schlachman ~ Annie Smaldone ~ Steve Small
Kathryn Strand ~ Rick Taylor ~ George Toscano ~ Eric & George Turer ~ Judy Wilson

RAISING FRIENDS FOR RMCC - ONE EVENT AT A TIME

21st Annual RMCC Golf Tourney

With the generosity of sponsors, donors, over 100 golfers, staff and volunteers we raised just over \$25,000. The event wouldn't be possible without their commitment. Thank you for an amazing day for RICHIE.



8th Annual RMCC Touch-A-Truck

The Touch-A-Truck was attended by more than 2000 people and 38 vehicles. We raised \$15,500 and kids thoroughly enjoyed climbing on, sitting in, and beeping the horns of their most favorite vehicles.



Seacoast Party 4-A-Purpose

The Mad Hatter was an incredible evening for Richie. The event raised just over \$11,000 and we were blown away by the generosity of all those who attended. Check them out at seacoastparty4apurpose.org.



★ THE RMCC TEAM: OUR BOARD OF DIRECTORS AND STAFF

STAFF CLINICIANS

Tina Carr, BS, EDUCATOR
Diane DiPalermo, MS, OTR/L,
 OCCUPATIONAL THERAPIST
Ellen Doller, MS, OTR/L,
 OCCUPATIONAL THERAPIST
Kristin Droste, MA, CCC/SLP,
 SPEECH & LANGUAGE PATHOLOGIST
Denise Ellis, M.ED., FAMILY COUNSELOR,
 SPEECH & LANGUAGE ASSISTANT
Sue Ford, M.ED., EARLY CHILDHOOD
 SPECIAL EDUCATOR
Sharon Griffin, MS, CCC/SLP,
 SPEECH & LANGUAGE PATHOLOGIST
Gerry Henry, MA, CCC/SLP,
 SPEECH & LANGUAGE PATHOLOGIST
Nancy Keating, MS, OTR/L,
 OCCUPATIONAL THERAPIST
Tracy Martel, BS, OTR/L,
 OCCUPATIONAL THERAPIST

Amanda Josiah Page, MS, CCC/SLP,
 SPEECH & LANGUAGE PATHOLOGIST
Meredith Pool, BS, OTR/L,
 OCCUPATIONAL THERAPIST
Janet Smaldone, BS, PT,
 PHYSICAL THERAPIST
Elizabeth Snow, MS, OTR/L,
 OCCUPATIONAL THERAPIST
Elaine Wilson, MA, CCC/SLP,
 SPEECH & LANGUAGE PATHOLOGIST
Cathy Zocchi, M.ED., EARLY CHILDHOOD
 SPECIAL EDUCATOR

ADJUNT CLINICIANS

Erika M. Baril, MA, CCC/SLP,
 SPEECH & LANGUAGE PATHOLOGIST
Sheila Mullen, MS, PT,
 PHYSICAL THERAPIST

INTERNS

Megan Murnane, UNH
 OCCUPATIONAL THERAPY
Emily Barratta, UNH
 OCCUPATIONAL THERAPY
Kristin Steward, NHTI
 EARLY CHILDHOOD EDUCATION
Celia Ellis, UNH
 PHYSICAL THERAPY
Kalya Papalian, KEENE
 EARLY CHILDHOOD EDUCATION
Kerstin Corey, UNH
 SPEECH THERAPY



BOARD OF DIRECTORS

PRESIDENT
Ed O'Brien
 ST. ANN'S HOME
VICE PRESIDENT
Helen Crowe, Ph.D.
 CLINICAL PSYCHOLOGIST
TREASURER
Tina Wilkinson
 OSRAM SYLVANIA
SECRETARY
Amy Ferris
 SELF-EMPLOYED
MEMBER-AT-LARGE
Trish Haneman Cox
 PORTSMOUTH SCHOOL DISTRICT & UNH

Emily Hammond, LINDT & SPRUNGLI
 (USA), INC
Myra Fishbein, JAMES S. FISHBEIN, DDS
Jeff Fox, USI INSURANCE SERVICES, LLC
Everett Lamm, MD
 EXETER PEDIATRICS
Christine Linnehan-Sununu
 GO FISH! DESIGN®
Dave McClung, PORTSMOUTH
 REGIONAL HOSPITAL
Kimberly Memmesheimer, HOEFLE,
 PHOENIX, GORMLEY & ROBERTS, P.A
Susan O'Brien, NEW ENGLAND ACADEMY
Patty Quinn, CHA COMPANIES
Bonnie Staniewicz, CFP®
 WADDELL & REED

ADMINISTRATIVE STAFF

Jessica Carbonneau, EVENTS COORDINATOR
Liz McConnell, OUTREACH COORDINATOR
Nathan Porter, FACILITIES MAINTENANCE
Julie Redlon, ADMINISTRATIVE ASSISTANT
Patty Small, PROGRAM RECORDS MANAGER
Peggy Small-Porter, EXECUTIVE DIRECTOR
Cheryl Walenty, FINANCE MANAGER

★ OUR MISSION

The Richie McFarland Children's Center is an early childhood program whose purpose is to help young children reach their full developmental potential and to support their families through that process. We provide developmental, early learning and therapeutic services for children with and without special needs, offer support and education for their families and guide families in the use of community and health resources. Each of our programs offers individualized services for the child and support and education for the entire family. Our clinical staff creates comprehensive teams to meet the individualized needs of every child. Each of our programs aims to support families in their role as their child's first and most important teacher. Although families come to RMCC to help their child, we rely on all caregivers to partner with us in pursuit of that collective mission. Parents know their children best and we know child development--when those two perspectives are brought to the table, positive outcomes for children, their families and our providers are attainable.

